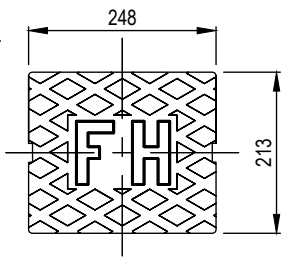
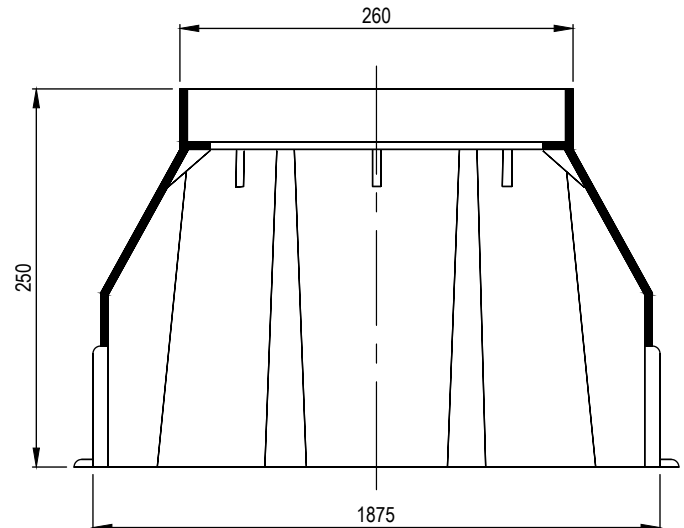


PE SURFACE BOX - OPTION 1 NOTES:

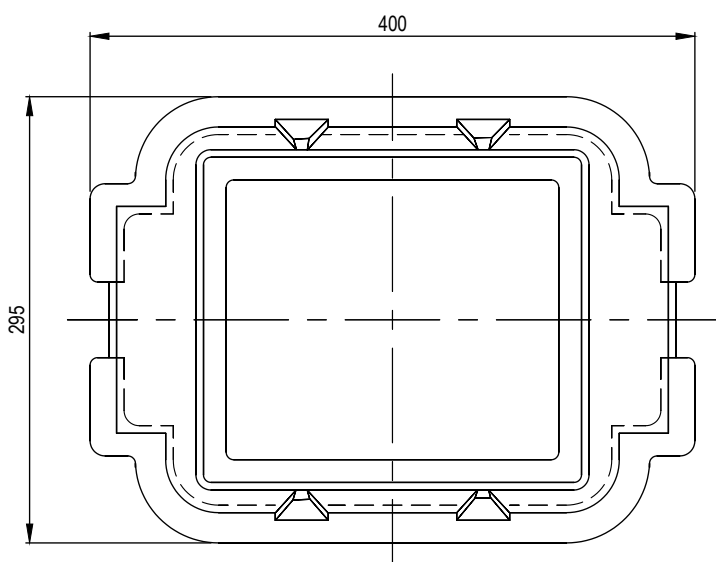
- 1. The lid is secured to the body by a galvanised chain with stainless steel nuts and bolts.
- 2. Boxes made from UV resistant,high impact,high density Polyethylene or heavy duty glass filled nylon.
- 3. Aluminum pins are attached to the underside of the lid for location purposes.
- 4. Tapered with stacking lugs makes storage and carriage easier.
- 5. Alternative valve boxes may be adopted where approved by the Service Authority.
- 5. All dimensions in millimetres.



COVER PLAN  
Scale: 1:10



SECTIONAL VIEW  
Scale: 1:5

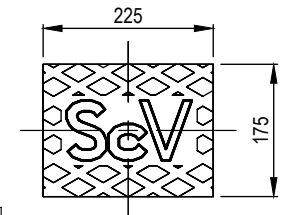


PLAN  
Scale: 1:5

POLYETHYLENE SURFACE BOX (OPTION 1)  
(FOR USE IN NON TRAFFIC AREAS ONLY)

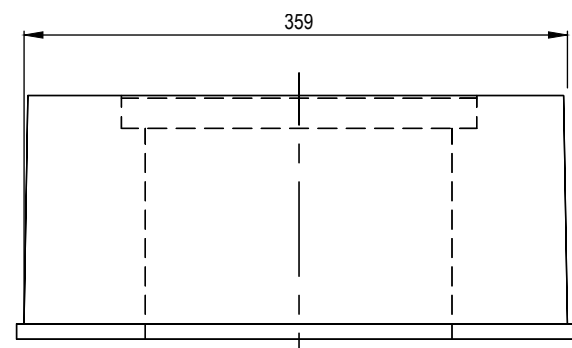
PE SURFACE BOX - OPTION 2 NOTES:

- 1. Mass of base & lid = 17kg approx.
- 2. Grey cast Iron, grade ≥ T180 to AS 1830.
- 3. Alternative valve boxes may be adopted where approved by the Service Authority.
- 4. All dimensions in millimetres.

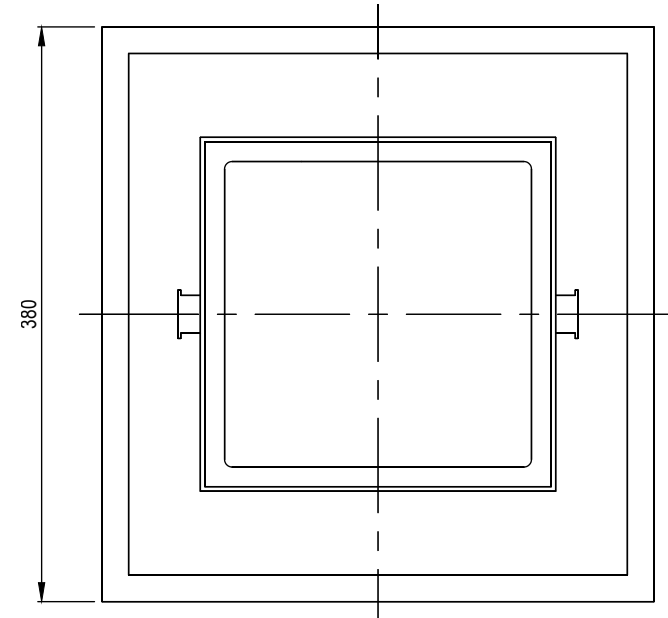


COVER PLAN  
Scale: 1:10

SURFACE BOX COVER REQUIREMENTS		
COVER TYPE	LABEL	COLOUR (POWDER COATED)
SLUICE VALVE	V	Refer applicability table
FIRE HYDRANT	FH	YELLOW
SCOUR VALVE	ScV	Refer applicability table



ELEVATION  
Scale: 1:5

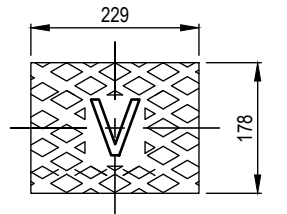


PLAN  
Scale: 1:5

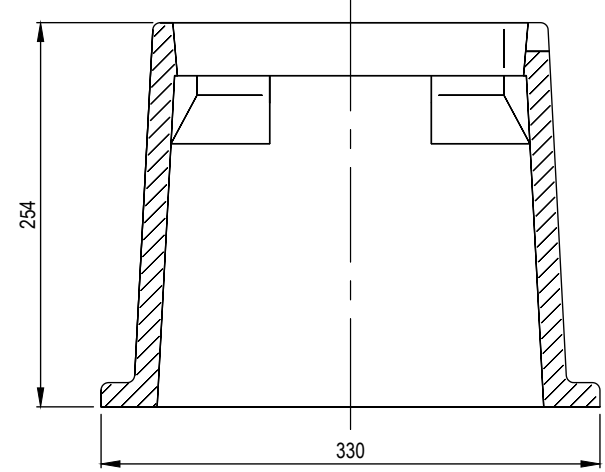
POLYETHYLENE SURFACE BOX (OPTION 2)  
(FOR USE IN NON TRAFFIC AREAS ONLY)

CAST IRON SURFACE BOX NOTES:

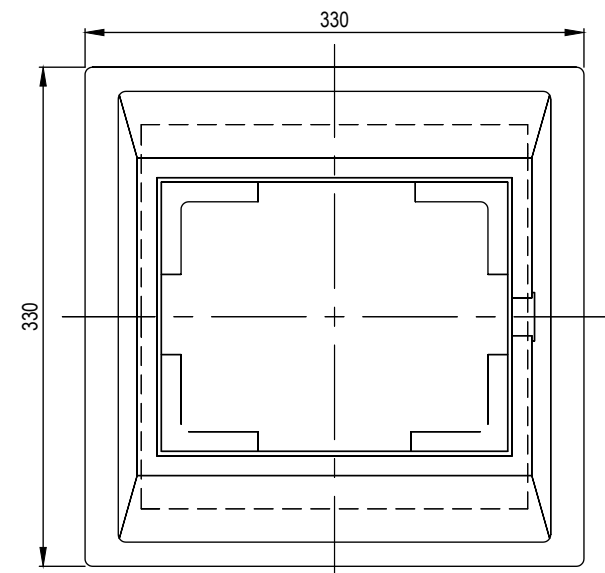
- 1. Mass of body = 37kg approx.
- 2. Mass of cover = 14kg approx.
- 3. Rounding of 5mm NOM. RAD. at all corners.
- 4. Grey Cast Iron, grade ≥ T180 to AS 1830.
- 5. Alternative valve boxes may be adopted where approved by the Service Authority.
- 6. All dimensions in millimetres.



COVER PLAN  
Scale: 1:10



ELEVATION  
Scale: 1:5



PLAN  
Scale: 1:5

CAST IRON SURFACE BOX  
(SUITABLE FOR USE IN TRAFFIC AREAS)

APPLICABILITY TABLE							
Council	BSC	CHRC	GRC	IRC	LSC	MRC	RRC
Option 1	Yes	Yes	Yes	Yes	No	No	No
Option 2	Yes	Yes	Yes	Yes	Yes	Yes	Yes
Valve Lid Colour	Blue	Blue	White	Blue	Blue	Blue	Blue

REVISIONS		DATE
E	DETAILS FROM DRAWING W-061A INCLUDED	04/2023
D	IRC ADDED	11/2016
C	GRC AND LSC ADDED	09/2014
B	RRC AMENDMENTS	05/2011
A	ORIGINAL ISSUE	01/2010

DISCLAIMER.  
The authors and sponsoring organisations shall have no liability or responsibility to the user or any other person or entity with respect to any liability, loss or damage caused or alleged to be caused, directly or indirectly, by the adoption and use of these Standard Drawings including, but not limited to, any interruption of service, loss of business or anticipatory profits, of consequential damages resulting from the use of these Standard Drawings. Persons must not rely on these Standard Drawings as the equivalent of, or a substitute for, project-specific design and assessment by an appropriately qualified professional.

Capricorn Municipal Development Guidelines  
Incorporating:  
Banana Shire Council (BSC)  
Central Highlands Regional Council (CHRC)  
Gladstone Regional Council (GRC)  
Livingstone Shire Council (LSC)  
Maranoa Regional Council (MRC)  
Rockhampton Regional Council (RRC)  
Isaac Regional Council (IRC)

HYDRANT AND VALVE SURFACE BOXES

WATER	
STANDARD DRAWING	A3
CMDG-W-061	
REV.	A B C D E