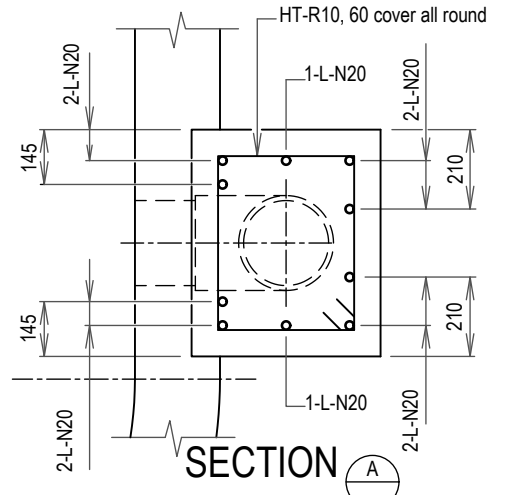
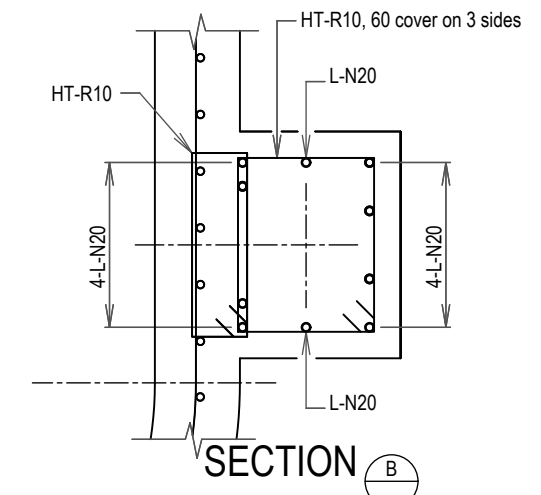


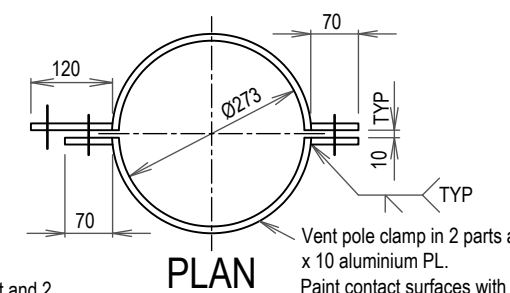
DETAIL 1



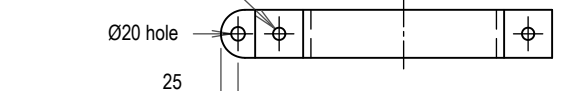
SECTION A



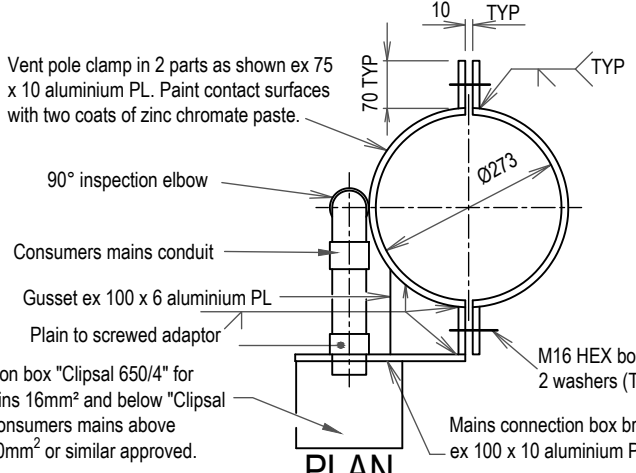
SECTION B



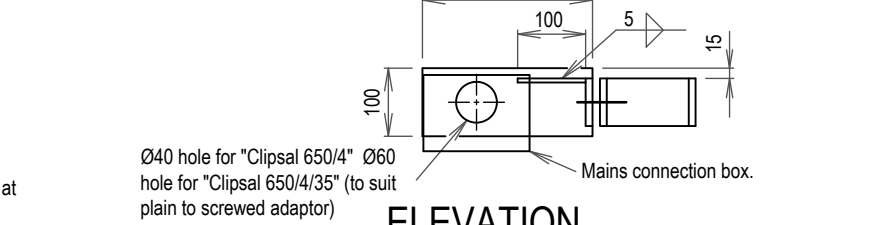
PLAN



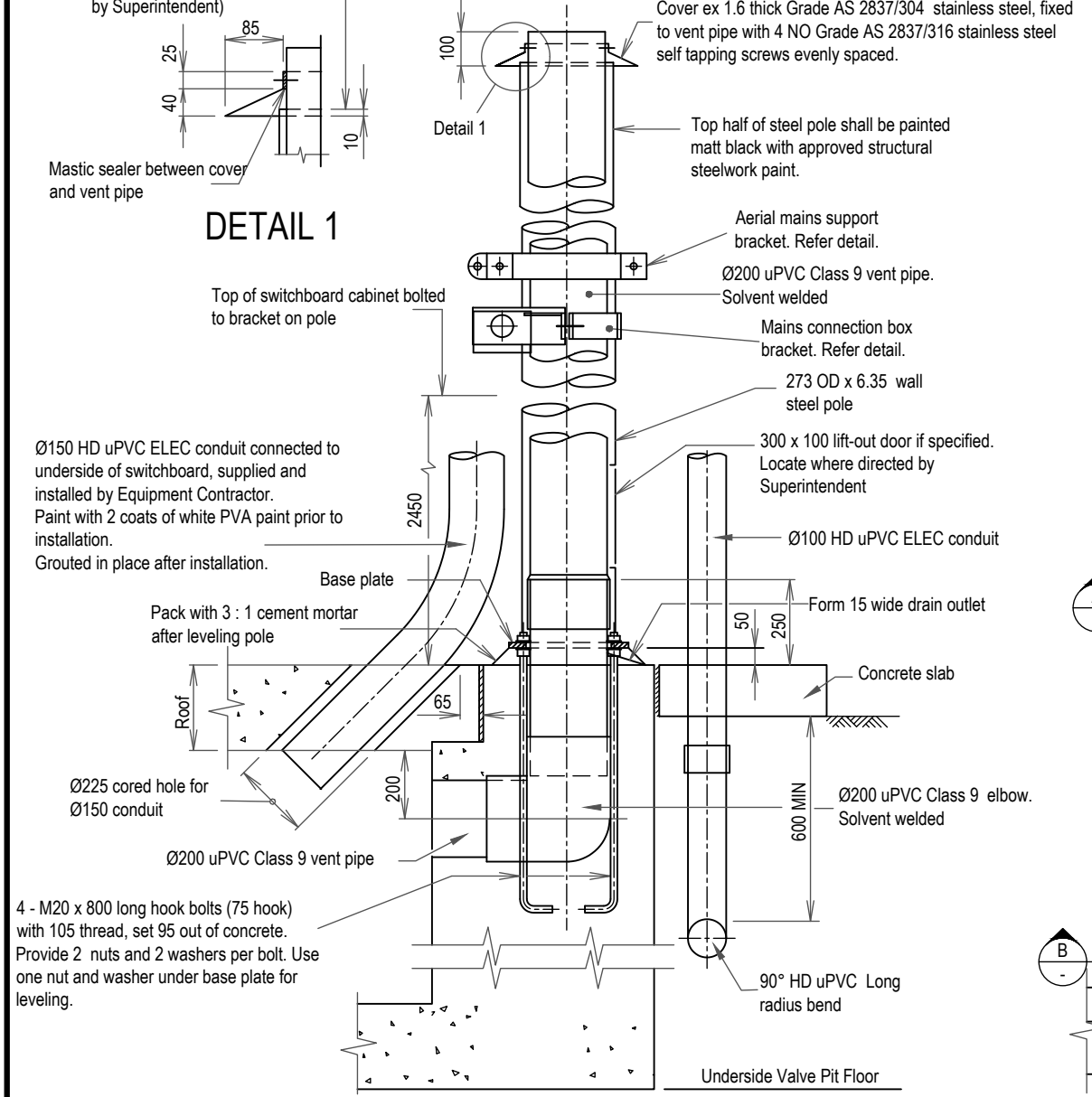
ELEVATION
AERIAL MAINS SUPPORT BRACKET



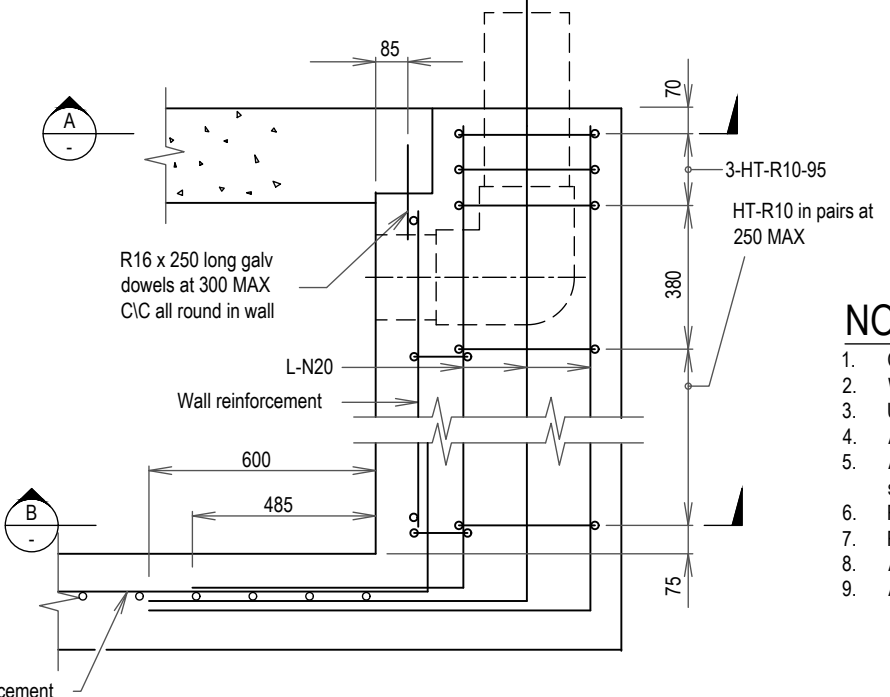
PLAN



ELEVATION
MAINS CONNECTION BOX BRACKET



SECTIONAL ELEVATION
VENT POLE DETAILS



SECTIONAL ELEVATION
REINFORCEMENT DETAILS

NOTES

- Concrete S32 in accordance with AS 1379 and AS 3600.
- Wind loads have been calculated for Terrain Category 2 and 3 in accordance with AS1170.2. Mt = 1. Region B.
- Unless noted otherwise, steelwork shall be hot dip galvanized after fabrication to AS/NZS 4680.
- All bolts, nuts and washers shall be Grade AS/NZS 1252.316 stainless steel.
- Anti-galling lubricant "Loctite 222 or 567" or similar approved shall be used on all threads and between all stainless steel abutting surfaces.
- Reinforcement identification is in accordance with Section 3 of AS 1100.501.
- Reinforcing bars to AS/NZS 4671. Reinforcement cover 50mm MIN.
- All electrical conduits to AS 2053.
- All dimensions in millimetres.

APPLICABILITY TABLE							
Council	BSC	CHRC	GRC	IRC	LSC	MRC	RRC
Applicable	Yes	Yes	Yes	Yes	Yes	Yes	Yes

REVISIONS	DATE
A	PREVIOUSLY DRAWING S-052 REVISION E
	09/2022

DISCLAIMER.
The authors and sponsoring organisations shall have no liability or responsibility to the user or any other person or entity with respect to any liability, loss or damage caused or alleged to be caused, directly or indirectly, by the adoption and use of these Standard Drawings including, but not limited to, any interruption of service, loss of business or anticipatory profits, of consequential damages resulting from the use of these Standard Drawings. Persons must not rely on these Standard Drawings as the equivalent of, or a substitute for, project-specific design and assessment by an appropriately qualified professional.

Capricorn Municipal Development Guidelines
Incorporating:
Banana Shire Council (BSC) Maranoa Regional Council (MRC)
Central Highlands Regional Council (CHRC) Rockhampton Regional Council (RRC)
Gladstone Regional Council (GRC) Isaac Regional Council (IRC)
Livingstone Shire Council (LSC)

SUBMERSIBLE SEWERAGE
PUMPING STATION
12.0m VENT POLE
TERRAIN CAT. 2 & 3

SEWER	
STANDARD DRAWING	A3
CMDG-S-036	
REV.	A