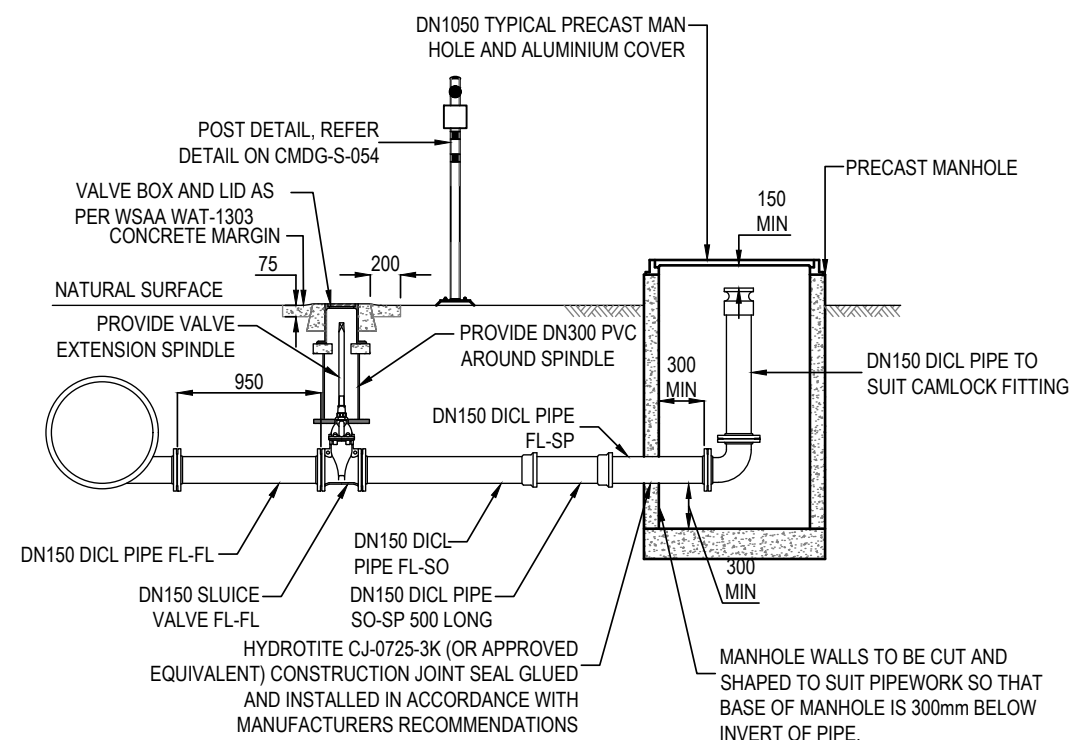


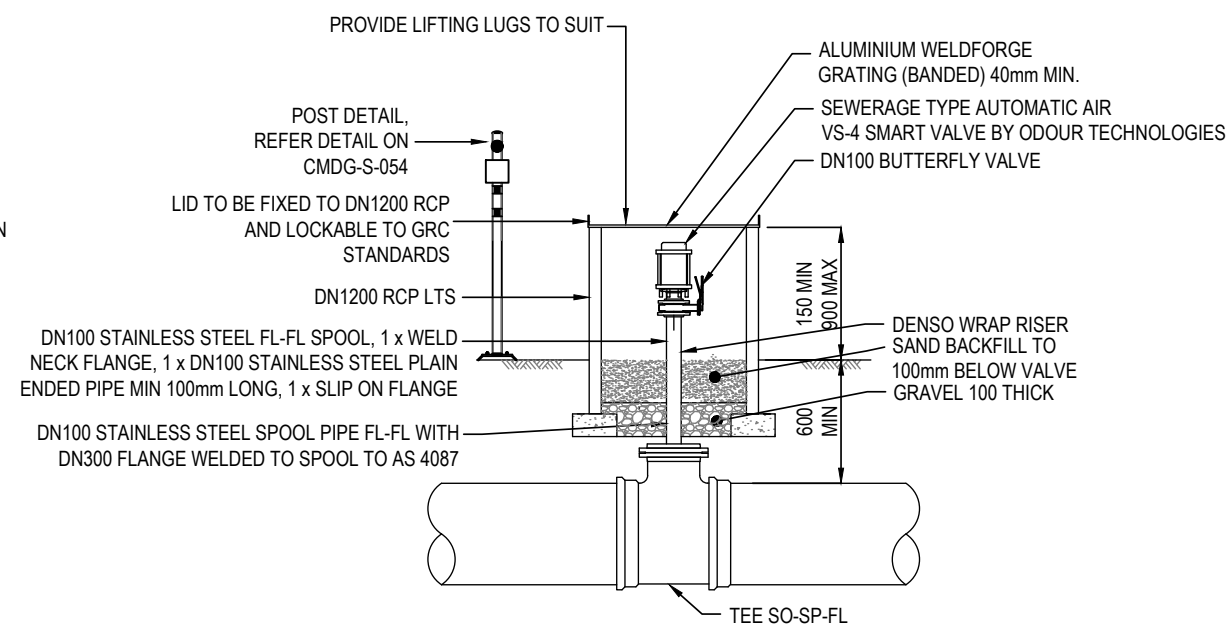
SCOUR DETAIL
SCALE 1:50

NOTE:

1. FOR FURTHER DETAILS REFER WSAA STD DWG WAT-1307.
2. IF RISING MAIN IS HIGHER THEN DISCHARGE POINT MANHOLE IS NOT REQUIRED



**SCOUR DETAIL
TRUCKING SCOUR POINT**
SCALE 1:50



TYPICAL AIR RELEASE VALVE

SCALE 1:50

NOTE: AIR VALVE TO BE LOCATED ABOVE GROUND WATER LEVEL, AIR VALVE AND RCP TO BE LIFTED 900 MAX ABOVE GROUND TO SUIT

APPLICABILITY TABLE							
Council	BSC	CHRC	GRC	IRC	LSC	MRC	RRC
Applicable	No	No	Yes	No	No	No	No
Applicable DWG							

REVISIONS	DATE
A	DETAIL ADDED. PREVIOUSLY DRAWING S-050Q REV B
	09/2022

DISCLAIMER.
The authors and sponsoring organisations shall have no liability or responsibility to the user or any other person or entity with respect to any liability, loss or damage caused or alleged to be caused, directly or indirectly, by the adoption and use of these Standard Drawings including, but not limited to, any interruption of service, loss of business or anticipatory profits, of consequential damages resulting from the use of these Standard Drawings. Persons must not rely on these Standard Drawings as the equivalent of, or a substitute for, project-specific design and assessment by an appropriately qualified professional.

Capricorn Municipal Development Guidelines
Incorporating:
Banana Shire Council (BSC)
Central Highlands Regional Council (CHRC)
Gladstone Regional Council (GRC)
Livingstone Shire Council (LSC)
Maranoa Regional Council (MRC)
Rockhampton Regional Council (RRC)
Isaac Regional Council (IRC)

**SEWERAGE PUMP STATIONS
SCOUR AND AIR VALVE DETAILS**

SEWER	
STANDARD DRAWING	A3
CMDG-S-057	
REV.	A