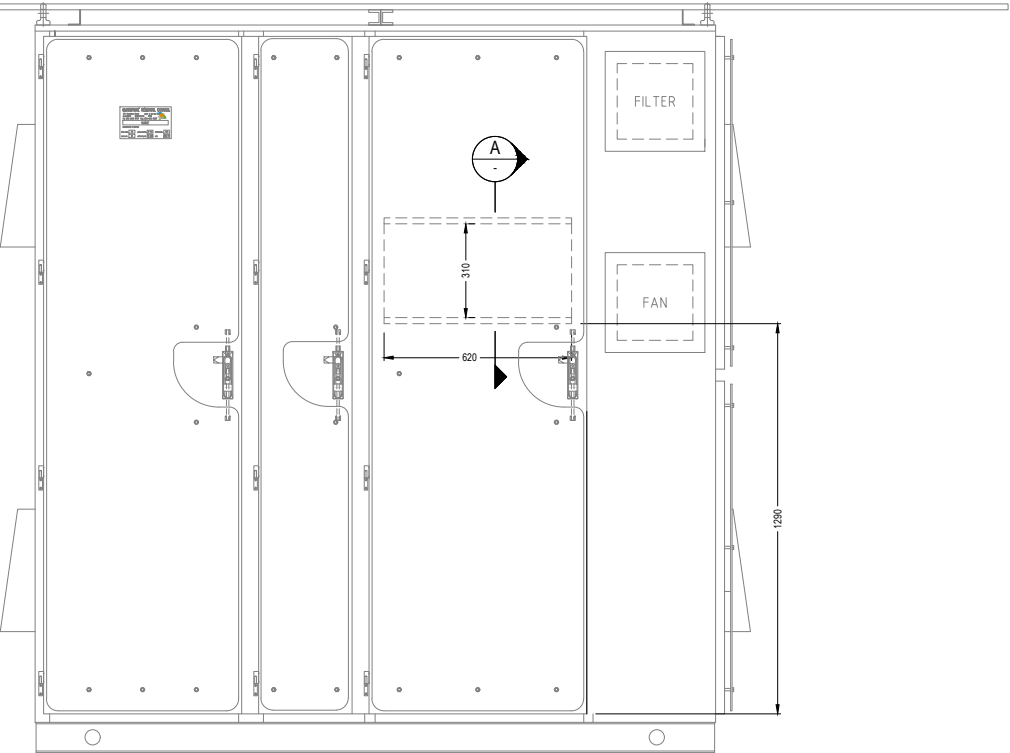
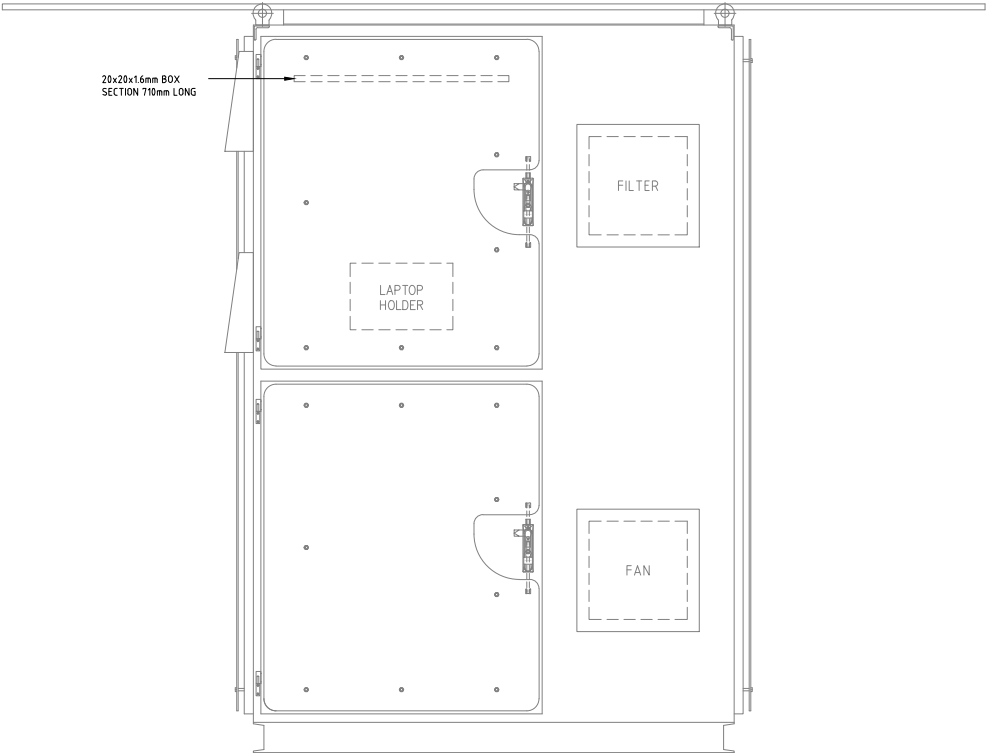


CONSTRUCTION NOTES:

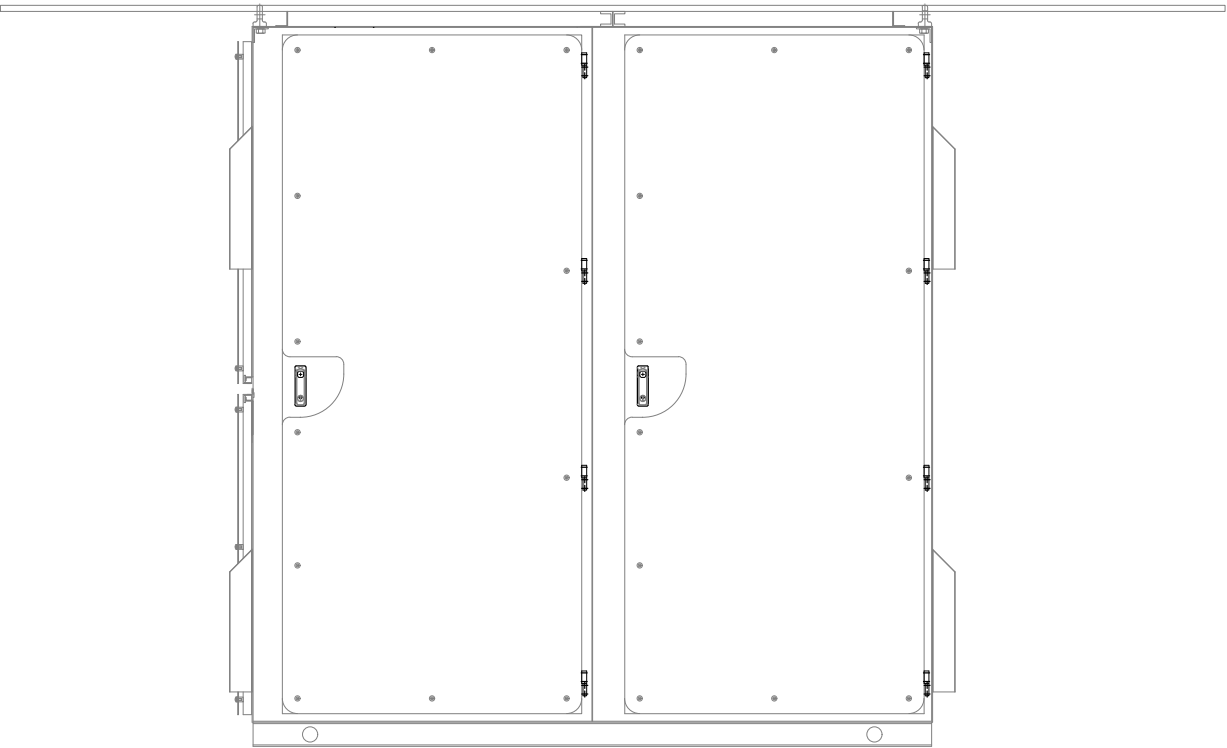
1. THE ENCLOSURE IS MANUFACTURED FROM MINIMUM OF 3.0mm 5052 ALUMINIUM, FOLDED AND WELDED, SANDED BACK FLUSH AND CORNERS ROUNDED.
2. ALL METALWORK IS THOROUGHLY REMOVED OF ALL SPLATTERS, OILS AND DIRT AND ALLOWED TO DRY.
3. THE METALWORK IS THEN POWDER COATED TO A TOTAL THICKNESS OF 70 MICRONS. FINISH COLOUR IS AS FOLLOWS:
ENCLOSURE INTERNAL/EXTERNAL: "PALE EUCALYPT - DULUX 84221".
EXTERNAL DOORS: "PALE EUCALYPT - DULUX 84221".
EQUIPMENT PLATES: "GLOSS WHITE".
ESCUTCHEONS/INTERNAL DOORS: "GLOSS WHITE".
4. PLINTH IS MANUFACTURED FROM 80x40x6mm ALUMINIUM CHANNEL.
5. THE ENCLOSURE IS WEATHERPROOF (IP56).
6. OUTER DOORS ARE AFFIXED USING H1 (LONG) PINTLE HINGES AND TO BE FITTED WITH S/S 3 POINT LOCKING MECHANISM.
7. ESCUTCHEONS ARE AFFIXED USING H1 (SHORT) PINTLE HINGES. ESCUTCHEON CATCHES TO BE QUARTER TURN "SQUARE INSERT".
8. LIFTING METHOD IS VIA TOP LIFTING LUGS REMOVABLE EYE BOLTS.
9. DOOR STAYS & LIMIT SWITCHES ARE TO BE FITTED TO OUTER DOORS.
10. DOOR HANDLE: DIRAK 207-9295.
11. ROOF RAIN HOOD/HEAT SHIELD MOUNTED ON 6MM ALUMINIUM C-SECTION - REMOVABLE.
12. SIDE HEAT SHIELDS MOUNTED ON ALUMINIUM LIFT-OFFS.
13. RAIN HOOD AND HEAT SHIELDS AFFIXED WITH 316SS M8 X 20 ALLEN KEY BUTTONHEAD SET SCREWS AND SPRING WASHERS.
14. CABLES PASSING THROUGH CUT-OUTS SHALL BE MECHANICALLY PROTECTED.
15. 4 OFF 291mm x 291mm CUT OUTS FOR FAN (GHV30A2220)/ FILTER (GHV30) UNITS
16. 2 OFF 223mm x 223mm CUT OUT FOR FAN (GHV2500211)/ FILTER (GHV25) UNITS
17. ITEMS 3, 5, 6, 7, 8 - SELECT PART NUMBERS FOR APPROPRIATE SIZE PUMP MOTOR.
18. ISOLATORS MUST BE INSTALLED WITH THE 'OFF' POSITION AT 12 O'CLOCK & TURNED CLOCKWISE TO 3 O'CLOCK FOR 'ON'.
19. CORNERS OF SUN-SHIELDS TO BE ROUNDED OFF



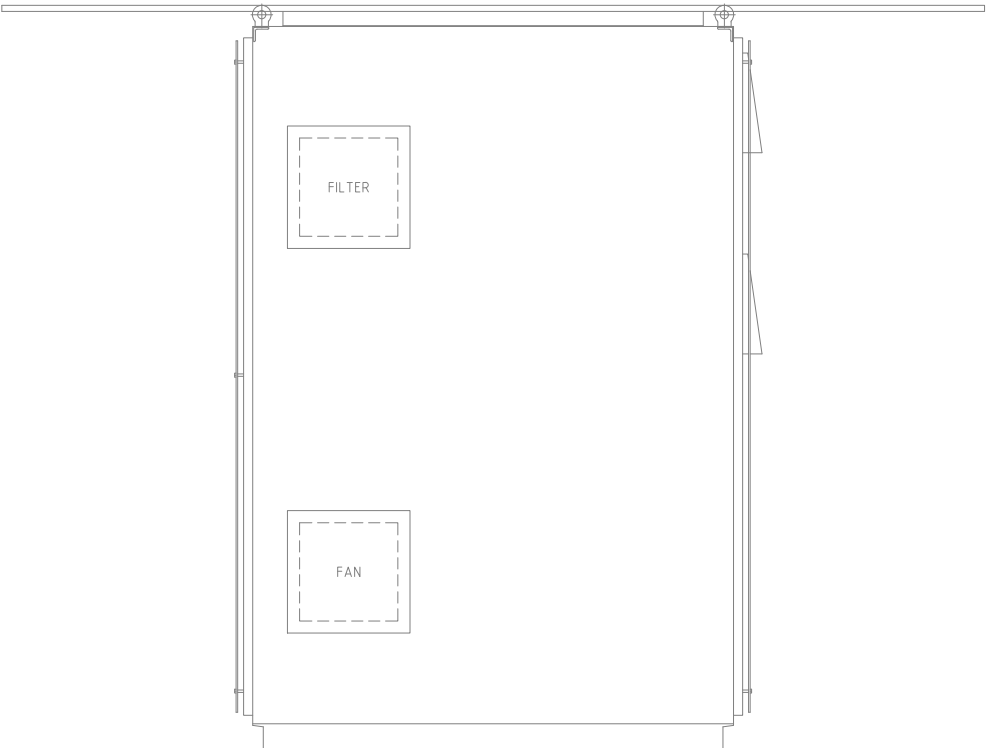
FRONT VIEW



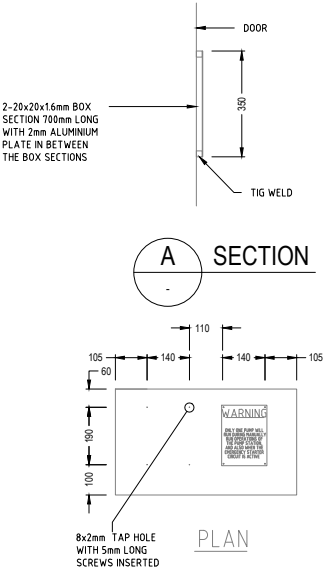
RH SIDE VIEW



REAR VIEW



LH SIDE VIEW



PLAN

×ALL DIMENSIONS ARE FOR GUIDANCE PURPOSE ONLY. THE MANUFACTURER MUST VERIFY THEIR SWITCHBOARD AS PER AS/NZS 61439 REQUIREMENT WHEN APPLICABLE AND AS PER AS/NZS 3000-2018 AND ALL THE RELEVANT STANDARDS AND LOCAL REGULATIONS, QECM AND MIRS.

AMENDMENTS			
REV	DESCRIPTION	CHECKED	DATE
0	ISSUED FOR REFERENCE		



**GLADSTONE REGIONAL
COUNCIL**

P.O. Box 29, Gladstone Qld. 4680

**STANDARD DRAWING
DUAL SEWERAGE PUMP STATION
SWITCHBOARD 22-160KW VSD
EQUIPMENT ARRANGEMENT 1**

DRAWING NO.

GRC-ED-109

A1 SHEET REVISION 0