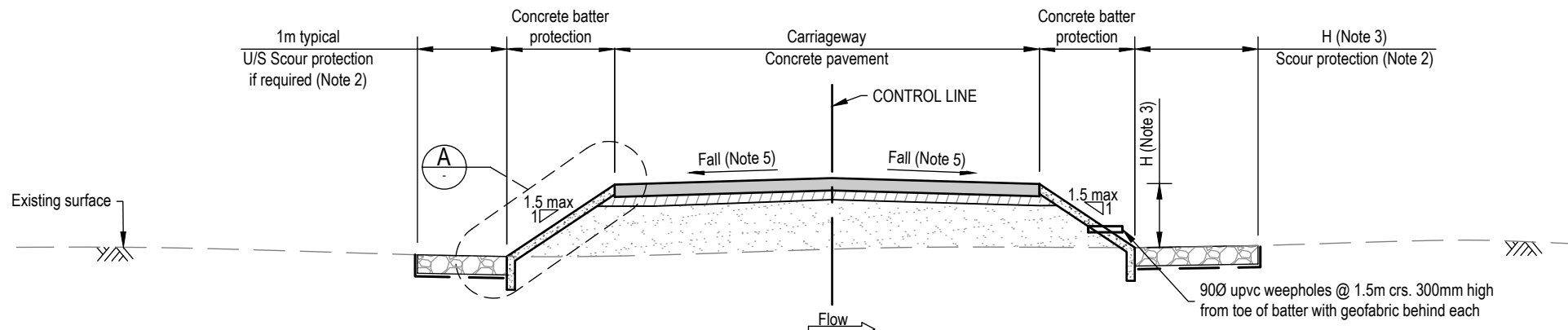


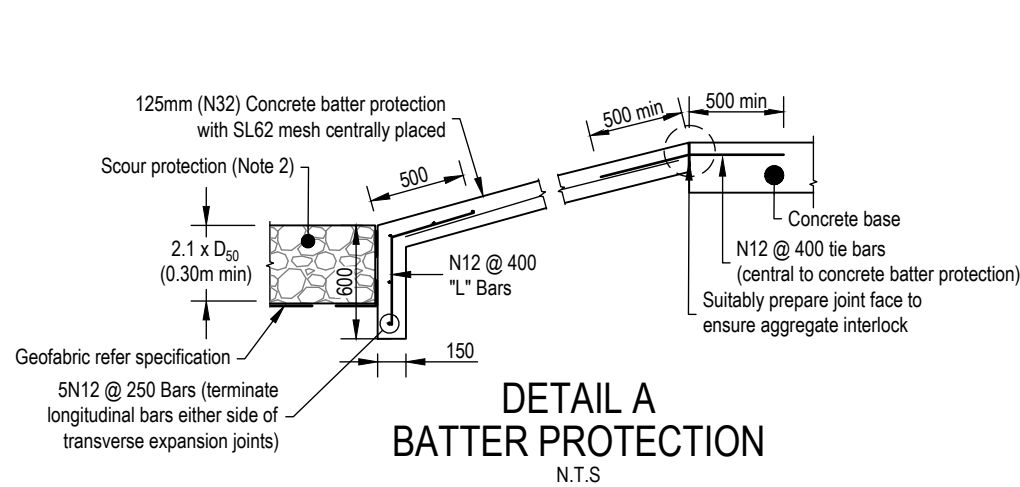
TYPICAL CROSS SECTION VIEW C
N.T.S. 095



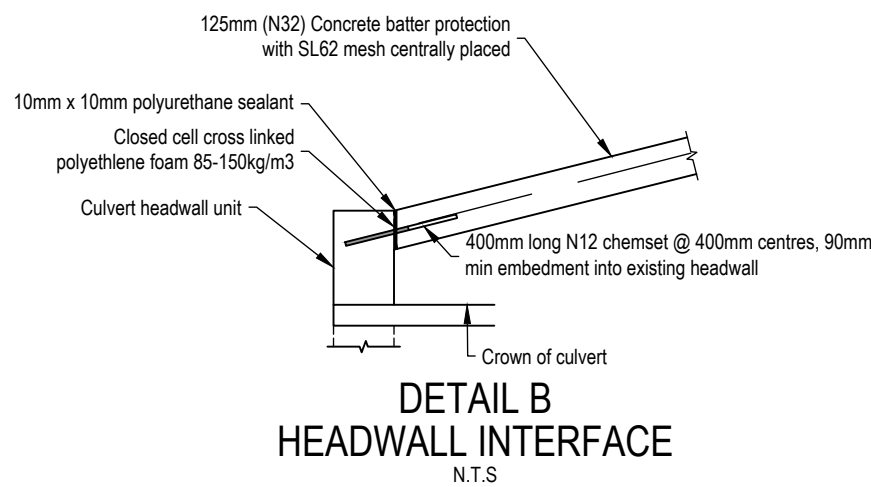
TYPICAL CROSS SECTION VIEW B
N.T.S. 095

NOTES

- For notes refer to CMDG-R-095 & CMDG-R-097.
- Scour protection extents and rock size (D50) to be determined by hydraulic analysis (min D50=200mm), completed by a registered professional Engineer of QLD (RPEQ) in accordance with QUDM.
- Width of downstream scour protection to be the height of batter. If batter height is greater than 2m, the width is to be 1.5H.
- All precast concrete products to be supplied and installed in accordance with the manufacturers specifications.
- Floodway cross fall typically 1% fall in the direction of flows for single lane floodways. For two lane floodway cross fall typically crowned with 3% fall each way. Cross fall will vary as required for site specific requirements.
- Provide concrete batter protection jointing in accordance with concrete pavement jointing standards, ensuring all joints are aligned.
- Batter protection jointing to match pavement jointing.



DETAIL A
BATTER PROTECTION
N.T.S.



DETAIL B
HEADWALL INTERFACE
N.T.S.

DRAWING APPLICABILITY TABLE							
Council	BSC	CHRC	GRC	IRC	LSC	MRC	RRC
Applicable	Yes	Yes	Yes	Yes	Yes	Yes	Yes
Alternative DWG	-						

REVISIONS	DATE
A	12/2025

DISCLAIMER.
The authors and sponsoring organisations shall have no liability or responsibility to the user or any other person or entity with respect to any liability, loss or damage caused or alleged to be caused, directly or indirectly, by the adoption and use of these Standard Drawings including, but not limited to, any interruption of service, loss of business or anticipatory profits, of consequential damages resulting from the use of these Standard Drawings. Persons must not rely on these Standard Drawings as the equivalent of, or a substitute for, project-specific design and assessment by an appropriately qualified professional.

Capricorn Municipal Development Guidelines
Incorporating:
Banana Shire Council (BSC) Maranoa Regional Council (MRC)
Central Highlands Regional Council (CHRC) Rockhampton Regional Council (RRC)
Gladstone Regional Council (GRC) Isaac Regional Council (IRC)
Livingstone Shire Council (LSC)

**FLOODWAY
CULVERT CROSSING
SECTIONS AND DETAILS**

ROADS	
STANDARD DRAWING	A3
CMDG-R-096	
REV.	A